



CARLYLE CROSSING

Visit Us At

CarlyleCrossing.com



Located just off Altamesa Boulevard in Fort Worth, Texas, just south of Hwy 377, close to parks, schools, dining, shopping & entertainment, Carlyle Crossing is the ideal community to call home!

With mature landscaping, crystal clear swimming pool, controlled access, and more, it's easy to see why Carlyle Crossing is perfect for your family!

Our spacious apartment homes offer a great value with the amenities and features you deserve!

Come check out Carlyle Crossing today!

INTERIORS

- Beautiful Swimming Pool
- Convenient to Shopping, Dining & Entertainment
- Controlled Access
- Fitness Center
- Spacious Floorplans
- BBQ Grills
- Clothes Care Center

COMMUNITY AMENITIES

- Large 1 & 2 Bedroom Apartment Homes
- Newly Renovations
- Large Walk-in Closets
- Fireplaces*
- Stackable Washer/Dryer Connections
- Choice Ammenities
- Private Patios & Balconies
- Pets Welcome**

FLOOR PLAN TYPES

- 1 Bed / 1 Bath 770 Sq. Ft.*
- 2 Bed / 2 Bath 1,100 Sq. Ft.*
- 2 Bed / 1.5 Bath 1,075 Sq. Ft.*



*Available in select homes.
**Restrictions may apply.

6300 Vega Drive, Fort Worth, TX 76133

(817) 423-2700





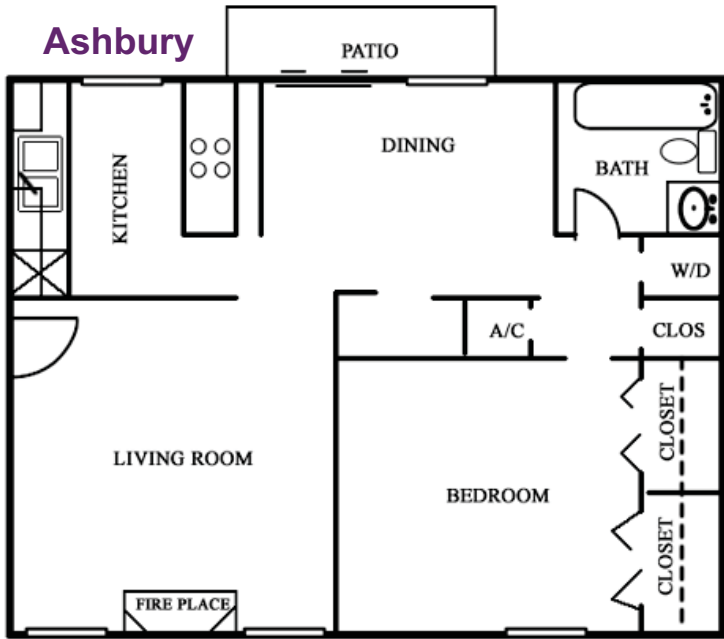
CARLYLE CROSSING

Visit Us At

CarlyleCrossing.com

FLOOR PLAN TYPES

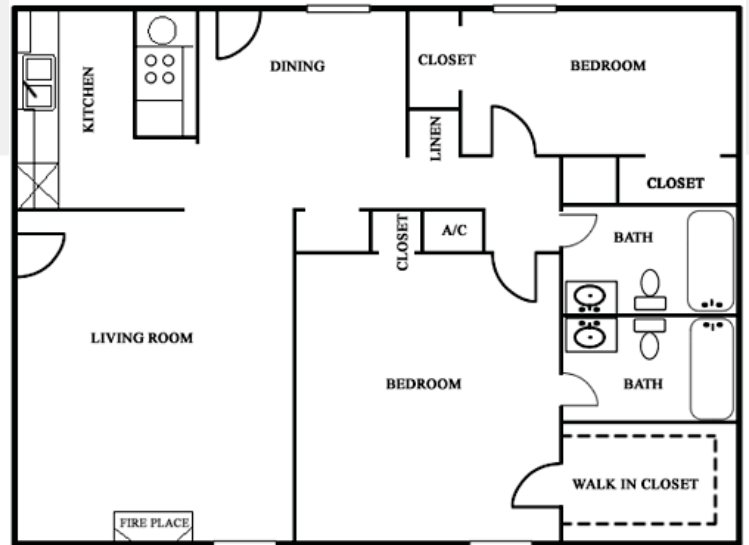
Ashbury



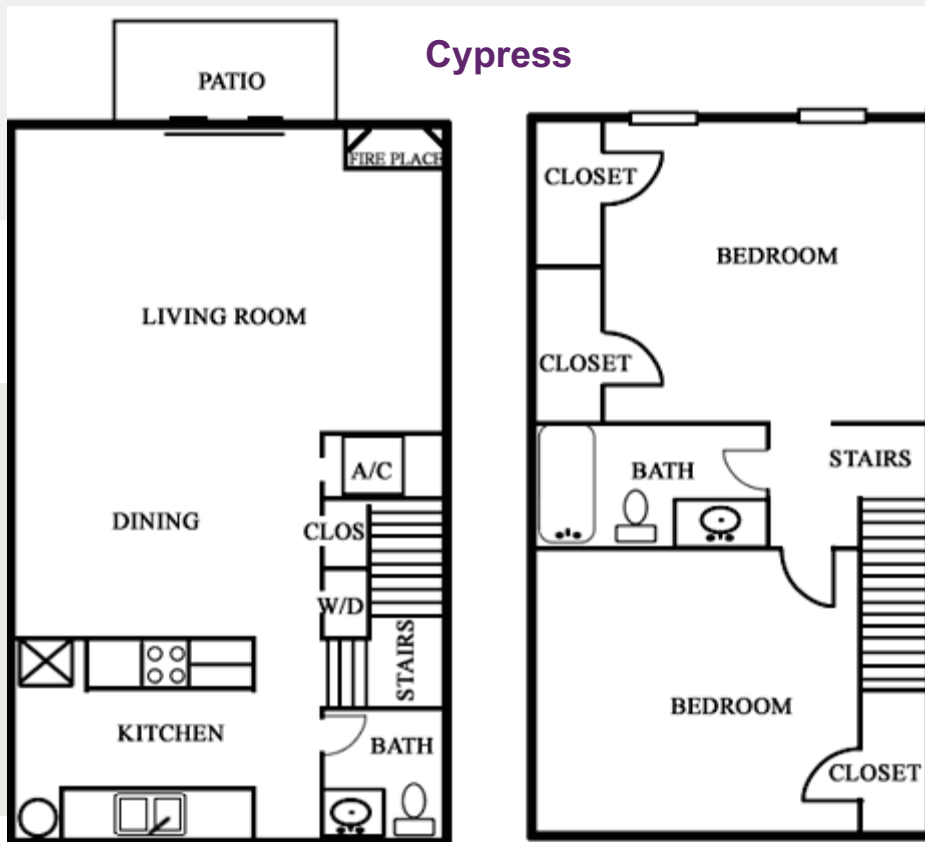
1 Bed / 1 Bath 770 Sq. Ft.*

Briarwood

2 Bed / 2 Bath 1,100 Sq. Ft.*



Cypress



2 Bed / 1.5 Bath 1,075 Sq. Ft.*

6300 Vega Drive, Fort Worth, TX 76133

(817) 423-2700

*Square footage is approximate. Actual floor plans may vary.

